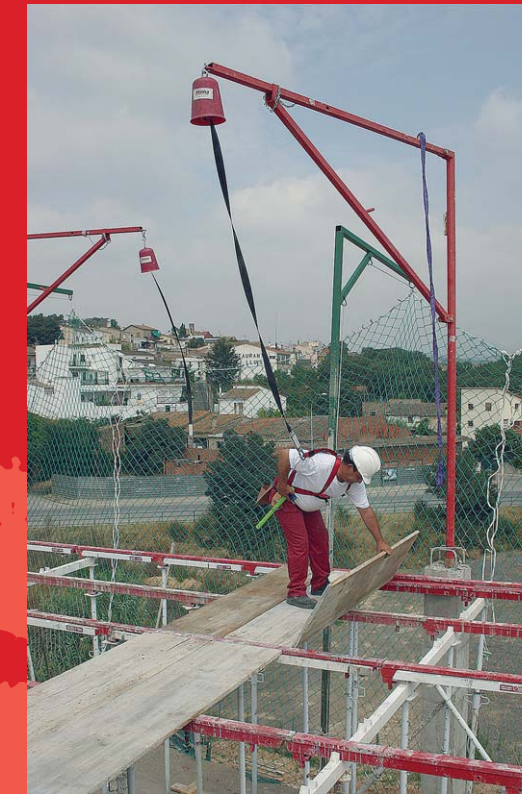


COMBISAFE®
SAFETY BY SYSTEMS



ALSIPERCHA: AN AWARDED SAFETY SYSTEM

- The "International Award for Creativity" from the Catalan Engineers Society (May, 2003)
- The "Award to the best fall arrest system" from the Barcelona Chamber of Building Contractors (May, 2003)
- The "Construmat 2003 award" for the most innovative construction product (October, 2003)
- The CAUPOLICAN Prize – European Award in Safety at work in Construction, from the General Council of Technical Architecture of Spain (February, 2004)
- The Special Mention in the Technical Novelties Competition of SMOPYC Zaragoza, Spain (March, 2005)

COMBISAFE®

Unit 1, Zone A, Cheaney Drive,
Grange Park, NORTHAMPTON, GB NN4 5FB

Tel: +44 1604 660 600
Fax: +44 1604 662 960
info@combisafe.com
www.combisafe.com

Alsipercha
Fall Arrest System

Alsina
FORMWORK SOLUTIONS

Alsipercha® - Product designed by Encofrados J. Alsina S.A. - www.alsina.com



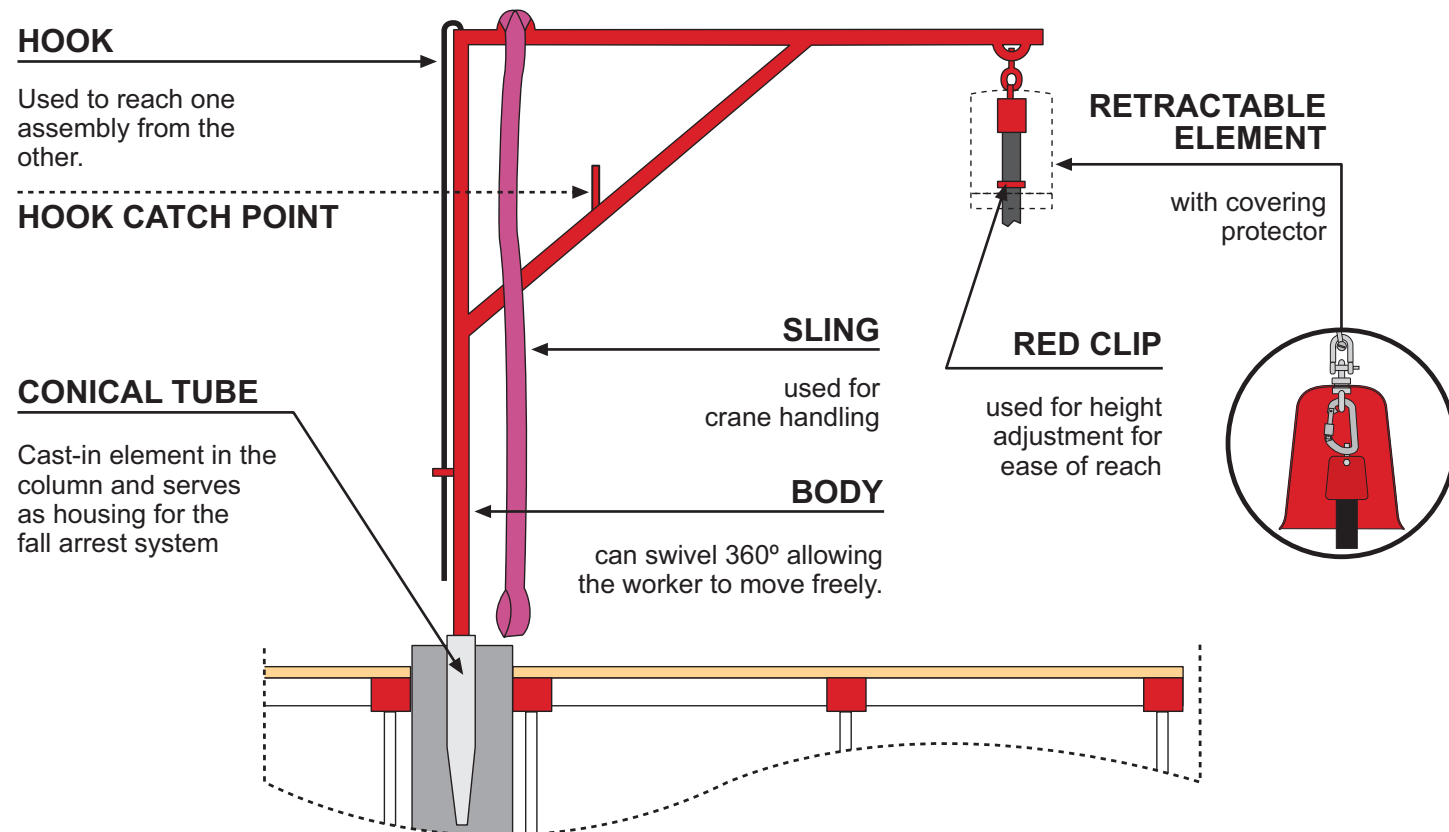
Safety system designed to prevent falls from height during the decking for horizontal formwork operation.

This is a "0" factor fall arrest system that is particularly useful on PERIMETERS. It provides total safety when placing: decking panels, edge protection, slab edges, stop-ends and generally all situations that may arise during the formworking process, where there is a risk of a fall from height. It is easy to assemble and use. No external assembly accessories are required.

FEATURES AND BENEFITS

- Complies to EN-795 Class B
- It allows the worker to safely cover a surface area of up to 125 m² and a radius of 6.5 m around the column.
- Metallic frame in an inverted "L" shape 2.5 m long horizontally and 4.3 m long vertically (this reduces to 3.5 m in height once it is inserted into the column)
- 80 Kg metallic structure, made of the highest quality steel (42-46 Kg/mm² elasticity limit, 61-76 Kg/m² breakage limit)
- 2.5 m maximum length retractable mechanism
- 850 mm long cast-in steel conical tube
- Moved by crane
- Has a wide range of accessories that allows it to be situated at any point on the job, providing total safety at all times
- The system has been designed for columns spaced at up to 8.5 m intervals (it is imperative that the hook accessory is used, on such column spacing).

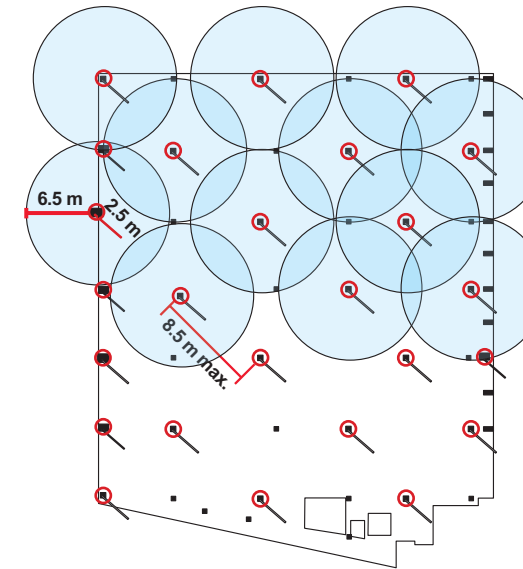
COMPONENTS OF THE SYSTEM



WORKING WITH THE SYSTEM

1.- Planning the area

Location of Alsipercha units are planned in advance to optimize and facilitate operators work area. By planning the area of operation using the 6.5 m working radius, we aim to cast-in conical tubes in only 50% of the columns on the floor plan (as indicated in red).



System Body: 2.5 m / Radius: 6.5 m
Column spaced: 8.5 m max

2.- Cast-in conical tubes

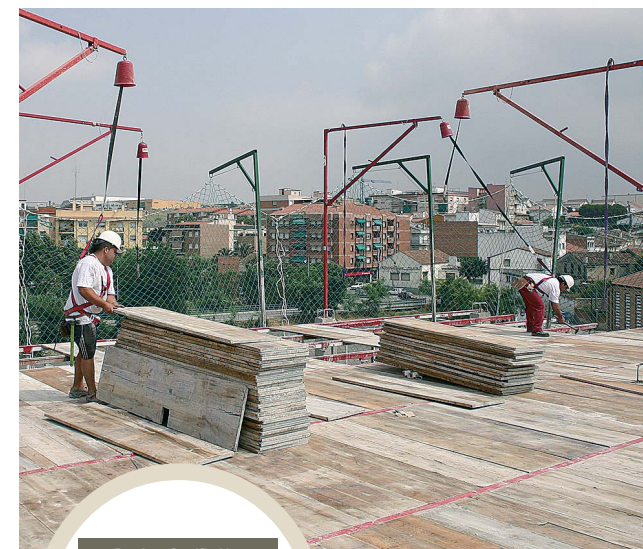
A conical tube is positioned, levelled and cast-in the concrete column. Allow for sufficient curing of concrete to enable safe operation of the system.



*Studies by Accredited Bodies, available to our customers on request, indicate that a column with the tube cast-in, does not impair its strength.

3.- Using the system

The fall arrest system is inserted into the conical tube. The operator's Harness is attached to the retractable element via a Harness Extender.



Product Certified by



ESPMDD005168-CPI

Secure and effective system to prevent falls from height during high risk Formwork operations.

4.- Changing anchor point

Once a particular area has been completed, we can change anchorage point in order to deck another area. When changing anchor point, it is essential to attach to the second anchorage point before releasing the first.

