

Uniquely **UBIX**[®] Temporary Roofing Systems

EVERY DAY IS A SUNNY
DAY WITH **UBIX**[®]

Safe in the knowledge you specified

COMBISAFE[®]
SAFETY BY SYSTEMS

EVERY DAY IS A SUNNY DAY WITH **UBIX**[®]

DRY | LIGHTWEIGHT | FLEXIBLE | FAST TO INSTALL | VERSATILE | TOTAL PROTECTION | WIDE SPANS | UNIQUE | SAFE

Wherever there's a need for temporary roofing to cover and protect you can rely on UBIX.
Covering every requirement in every application.

COMMERCIAL

Fast, total weather protection to both new build and refurbishment projects eliminating weather-related downtime; helping to avoid costly penalty charges.

HOUSING

UBIX provides cover for both new build and roof refurbishment and replacement projects, protecting fixtures, timbers and tradesmen from rain and wind.

PRODUCTION

Long and short term temporary roof protection for sensitive manufacturing and production equipment. Delivers internal protection from falling debris and dust.

HERITAGE

Protection for old and delicate building structures that may be uncovered as part of the renovation process. Also shelters sites, artefacts and workers and helps preserve local heritage.

EVENTS

Temporary outdoor cover for trade fairs, events, concerts and sports grounds.

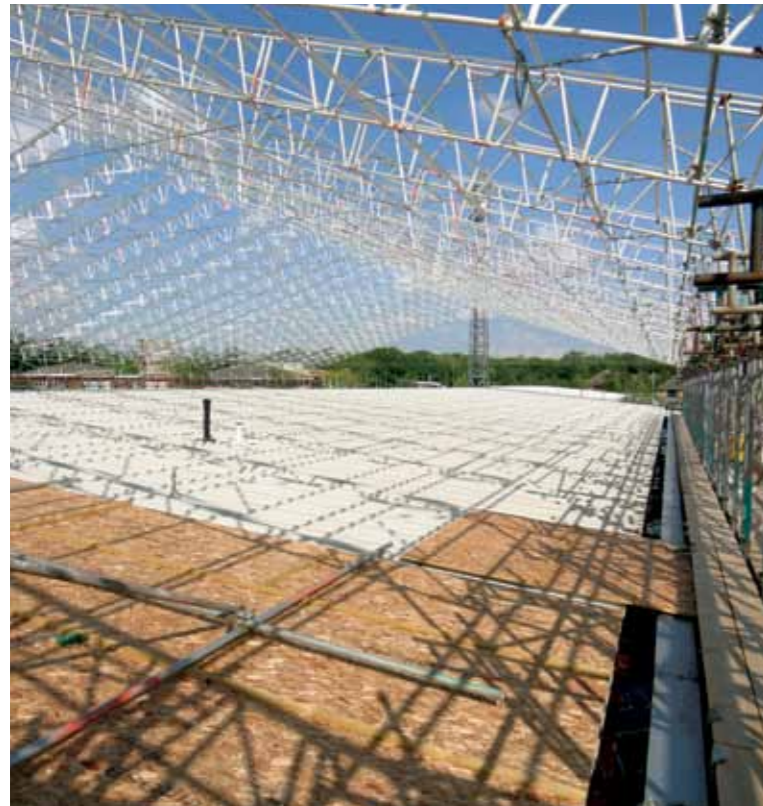
TRANSPORTATION

Shelters exposed wiring, new paintwork, materials and workers from the elements. Also contains the spread of abrasives or chemicals used in the construction or refit process.



UBIX[®] TEMPORARY ROOFING SYSTEMS

UBIX®. THE HEIGHT OF VERSATILITY, SPEED AND SAFETY.



MAYLANDS INDUSTRIAL ESTATE, HEMEL HEMPSTEAD UK

A proven, economical solution in everything from small domestic projects right up to large scale industrial and infrastructure contracts allowing unsupported spans of 40 metres and more.

The UBIX system consists of a lightweight but robust frame of specialist aluminium beams and snap-on braces, covered with tensioned, weatherproof keder sheeting.

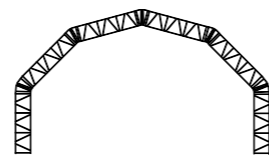
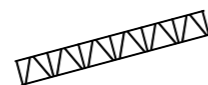
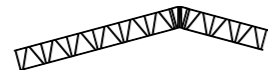
At just 8kg per square metre, it's the lightest temporary roofing solution on the market.

With a choice of bay widths (2.07m, 2.57m or 3.07m) and beam depths (45cm or 78cm), it's one of the most versatile too. Allowing for totally bespoke designs to meet your specific cost and span requirements.

The result is a flexible, sturdy system that offers easier, quicker assembly and provides protection from the elements in a safer, more comfortable working environment for as long as it's needed on-site.

UNDOUBTEDLY VERSATILE.

The UBIX temporary roof will cover almost any roof size and shape. With its outstanding versatility and adaptability to all roof profiles, including asymmetric and irregular roof layouts, UBIX delivers a ready temporary roofing solution for most applications:



BEAM SIZE	SYMMETRIC	ASYMMETRIC ¹	MONO PITCH ²	ARCH ³
45cm	21m	18m	14m	27m
78cm	36m	32m	19m	44m

Notes
¹ Asymmetric roof assumes one side slope 50% longer than the other side
² Mono pitch span assumes a minimum angle of 15°
³ Arch uses 3 or 5 ridge beams

Greater spans are possible depending on the exact site conditions and the adoption of additional design measures.

CASE STUDY

Project: Chartwell House, Kent, UK
Client: National Trust
Main Contractor: Clarke Roofing (Southern) Ltd
Scaffolding Contractor: P & T Scaffolding Ltd
Equipment Supplier: Deborah Services Ltd
Products: UBIX® Temporary Roofing System

"We needed a high performance roof to cover this historic building and had to be sure that its weatherproofing was to a high quality. We looked at the alternatives but the reputation that UBIX has within the industry is second to none. This project required a complex temporary roof structure, with several changes of span and transitions from duo to mono-pitch, as well as both high and low-level zones. I was particularly impressed by the flexibility of the UBIX system - its ease of use and the ability to use universal beams in other applications is a definite bonus."



YOUR PARTNER IN SAFE SCAFFOLDING AND ACCESS SOLUTIONS.

For over two decades, Combisafe has set the standard in accident prevention, protection and safe access systems for the construction industry.

We work closely with customers and policymakers to provide up to the minute advice, best practice guidelines and innovative new product solutions for those charged with maintaining health and safety on-site.

UBIX is part of our comprehensive range of safe scaffolding and access solutions.

WHY CHOOSE UBIX® ABOVE OTHER TEMPORARY ROOF SYSTEMS?

THE BENEFITS OF UBIX AT A GLANCE.

For the scaffolder

Speed: Quick, lightweight system for easy assembly and disassembly.

Versatility: Compatible with all roof types. Covers large spans.

Cost: Less time and labour on site.

For the scaffold designer

Versatility: Compatible with all roof types. Covers large spans.

Bespoke planning: RoofPro® software design system, plus Combisafe Engineering Services.

Safety: Sturdy construction and added protection for workers at height.

For the main and sub contractors

Reduced downtime: Weatherproof cover reduces days lost to poor weather, meaning building work is completed sooner.

Speed: Quick, lightweight system for easy assembly and disassembly.

Safety: Sturdy construction and added protection for workers at height.

For the building owner and end-user

Reduced cost: Building work is completed sooner under weatherproof cover.

Protection from rain and wind damage: Protects building fabric and contents from exposure to the elements during external building work and can contain dust and debris during indoor work.

For its Versatility

UBIX employs a modular frame system that gives you a choice of asymmetric, symmetric, mono pitch and arch spans and allows for complete flexibility of design in any application.

Choice of Sheet Weights

You can specify from a choice of sheet weights depending on the demands of the job: lightweight for smaller, summer projects right up to storm proof sheeting for larger canopies in areas subject to excessive wind, rain and snow.

Adding still more to the versatility of UBIX is the fact that the covering in its unbraced bays can be quickly removed so machinery or other bulky loads can be craned into place.



Split Bays

Split bays are possible, allowing the canopy to follow an irregular roofline, reducing excessive overhang. The same technology helps make use of any length beams you might have in stock, utilising your existing resources more effectively and reducing costs still further.

Integrate with Other Systems

UBIX® is also designed to integrate with other scaffolding systems to add still more to its flexibility - although the strength, lightness and regular bracing intervals of the 'pure' system may be compromised.

The system offers total erection flexibility and assured safety. The methods available, depending upon the size and shape of the roof and site conditions, include: In-situ erection (supported with a perimeter platform), erection by crane, erection from central tower and roll-out method. The Roll-out method, using RunWay®, is Combisafe's recommended option due to its inherent safety as it avoids work at height.

For its Speed

Quick and easy to handle and erect, UBIX requires no specialist tools or lifting gear.

It's lightweight, aluminium frame components can be managed at height by a relatively small team and its boltless fixings allow for rapid, 'snap and lock' assembly.

Rapid Assembly

With more rapid assembly, of course, comes reduced time and labour costs. For planning purposes, assume a rate of 250sq.m. on the first day and 450sq.m. on subsequent days.

And because a roofing system that is quick to erect is also quick to disassemble, you benefit from reduced hire costs at the back end of the job as well.

For its Safety

Safety is in the Combisafe DNA. All our innovations as a company are directed towards making the workplace safer and healthier and UBIX is no exception.

Reduced Risks

The RunWay track system on which the UBIX structure can be mounted means roof bays can be assembled at the safe, guarded gable end of a building and pushed easily into position. Reducing the risks involved in working at height.

Because UBIX keder sheets are installed and fixed from underneath the canopy rather than on its exposed top surface, the potential for accidents is further reduced.

No Wrenches or Hammers

Plus, UBIX boltless fixings aren't just quicker. With no wrenches or hammers to be dropped onto the site below, they're far safer than conventional methods too.

COMBISAFE TOTAL SUPPORT SERVICES.



Design Support & Guidance

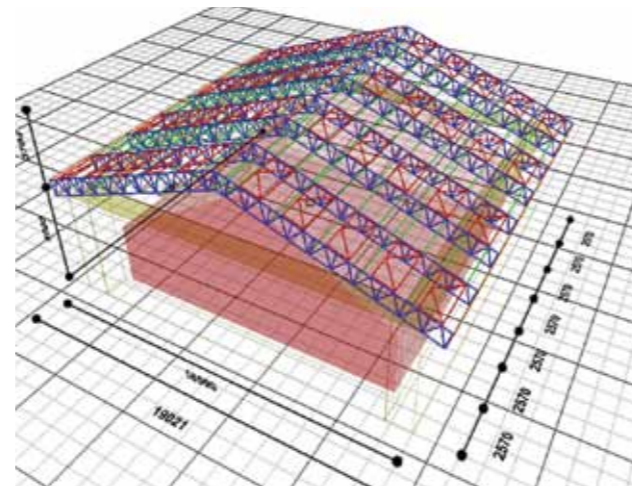
Design support is a critical consideration if your roof span is greater than 45m or is subject to extreme weather conditions. In these circumstances, you should always contact the UBIX support team for help in engineering a bespoke roof to fit your application.

As well as offering a full technical service, our advisers will also help make sure your roof and safe access designs conform to all relevant UK and European legislation on temporary roofing, including TG 09:10 Code of Practice for the Design and Construction of Temporary Roofs (UK only) and EN 1991 for wind and snow loading.

RoofPro® Project Planning Software

RoofPro is a unique service from Combisafe. It's an easy, intuitive software design programme that allows you to calculate your requirements, even factoring in geographical variations such as wind and snow.

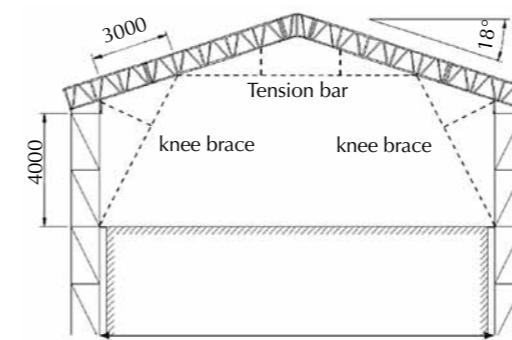
RoofPro is relatively sophisticated; however, it doesn't do away with the need to talk to a UBIX adviser. Calculations for irregular roofs must still be made manually to ensure the correct specification for the job and we recommend you always consult with one of our team to be certain your figures are correct.



Application Guidelines

The notes which follow have been prepared for the guidance only of those concerned with specifying the system and therefore, do not form a part of any contract.

Typical Section - additional bracing members are shown dotted. (These additional bracing members or other measures may be specified by the responsible design engineer.)



Important Notes

For each UBIX® application, the complete roof system together with its support structure must be designed by a competent engineer to meet the particular contract requirements. Combisafe does not supply design calculations and working drawings as part of its sale contract for UBIX but may do so as an option against specific order and payment by the customer.

The UBIX roofing system is designed on the basis of a series of simply supported beams and it is the contractor's responsibility to provide a suitable support structure.

It is also the contractor's responsibility to meet the requirements of the appropriate statutory regulations and relevant codes of practice for the particular location.

Combisafe provide a dedicated support service for users of the UBIX® system at every stage of the process.

It includes:

- Full product training, either on-site or at a Combisafe Safety Centre.
- A full breakdown of costs and system requirements based on a pre-quotation questionnaire.
- System design and technical support.
- Site visits to advise on safe access issues and the most suitable methods for planning and erecting a UBIX system.
- 'On tap' application advice by phone, e-mail or fax.

CASE STUDY.

Project: Falu Tingsrätt, Falun, Sweden

Client: Domstolsverket

Main Contractor: Byggpartner AB

Scaffolding Contractor: JUF Byggnadsställningar AB

Products: UBIX Temporary Roof with Tension Bar System

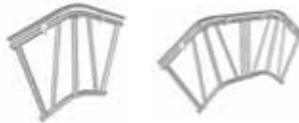
"I have had great results with UBIX since investing in the system last year and the service from Combisafe has been excellent. They have helped me with design and erection advice, so that the jobs have gone really smoothly. We will certainly be looking to use UBIX in future whenever we need reliable weather protection."



PRODUCT COMPONENTS.

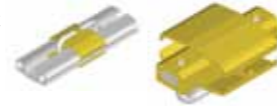
Ridge Units

Used for creating pitched roofs and large spans. Join two units together at the eaves to create buildings or eliminate scaffolding. Separate ridge tracks are attached using spring clips.



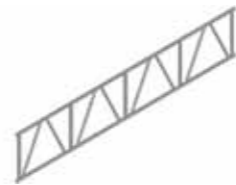
Rubber Spigot

Aligns, retains and seals track joints all in one.



Specialist Series Beams

0.45m or 0.78m deep. Aluminium unit beams for incorporation within any type of scaffolding. Large spans are possible using in-line spigot jointed beams. Beams are connected to scaffold standards using double couplers. Connection at any point using standard scaffold fittings. Simple spigot connection for beams.



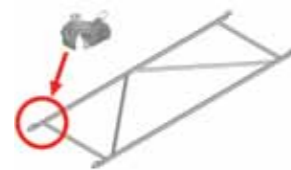
Sheet Pulling Bar

Special sheet pulling bars with roller wheels aid easy sheet installations. Adjusts to all bay sizes.



K Frame

Brace frame which connects the top members of adjacent beam trusses in a fully-braced bay. The ends have a special claw casting for simple fixing. The casting includes a top track mounting button. 2.07m, 2.57m or 3.07m wide.



Fasteners

Used for joining beams together and for securing ridge tracks.



Diagonal Brace

Provides diagonal bracing between top and bottom members of adjacent beam trusses. It is similar to, but longer than, the horizontal brace. There are no buttons on the claw castings. 2.07m, 2.57m or 3.07m wide 0.45m or 0.78m deep.



Sheeting

Heavy-duty PVC coated sheet with acrylic lacquer and 3-year anti-UV guarantee, standard colour white, flame retardant with nylon keder beads to each edge.



Tracking

Aluminium extrusion used to secure edges of roof sheeting. Slides onto integral buttons on brace claws. 2m, 3m or 4m long.



Accessories

Track stops and intermediate roller brace couplers for tracking end termination. Track couplers for securing keder track to scaffold tubes or beams, for special applications.



Horizontal Brace

Provides horizontal restraint between main chords of adjacent beam trusses. Ends include the claw casting and track mounting button. 2.07m, 2.57m or 3.07m wide.



Roller Brace

Used at eaves and ridge to aid sheet tension and installation. Spring-loaded pin drops into the provided socket. 2.07m, 2.57m or 3.07m wide.



Tension Bar and Knee Brace

Individual roof design calculations may require use of a tension bar linking each side of the roof truss to eliminate sag and outward thrust or knee braces to reduce the effective roof span. These components and the required connection to the UBIX® beam are available as part of the UBIX system. Modular sizes, extendable to any length.



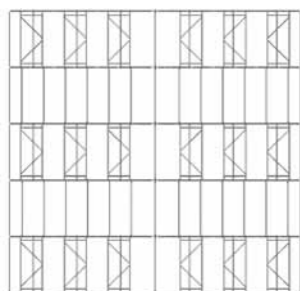
RunWay® Track System

Available as an option for safe erection, also for opening roofs. Modular track beams with custom-designed anti-uplift rollers. 2m, 3m long. For full details see separate RunWay brochure.

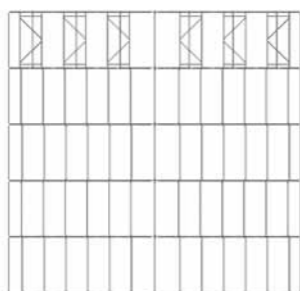


BRACING CONFIGURATIONS.

Braced bays 1 – in – 2



Braced bays 1 – in - 5



A UBIX® roof is built up from a combination of fully-braced bays and infill bays. Fully-braced bays use K-frames and diagonal braces to link the lattice beams, stiffening the roof in all 3 planes. Infill bays are simply linked with horizontal braces, without the need for additional stiffening. Braced bays are needed 1 in every 5 bays, plus a braced bay at each gable end. Roofs erected by crane will usually need to be braced 1 in every 2 bays, plus a braced bay at each gable end.

COMBISAFE AROUND THE WORLD.

UNITED KINGDOM

Combisafe International Ltd
Group Head Office
Safety Centre
Cheaney Drive
Grange Park
Northampton NN4 5FB
United Kingdom
Tel: +44 (0)1604 660600
Fax: +44 (0)1604 662960
Email: info@combisafe.co.uk

SWEDEN

Combisafe International AB
Parent Company
Storsjöstråket 15
SE-831 34 Östersund
Sweden
Tel: +46 (0)63 150260
Fax: +46 (0)63 129330
Email: info@combisafe.se

Stockholm Office
Kung Hans Väg 8
SE-192 68 Sollentuna
Sweden
Tel: +46 (0)8 354048
Fax: +46 (0)8 920196
Email: info@combisafe.se

NORWAY

Combisafe Norge AS
Kongeveien 49
1412 Sofiemyr
Norway
Tel: +47 (0)66 99 69 20
Fax: +47 (0)66 99 69 21
Email: info@combisafe.se

NETHERLANDS

Combisafe Nederland BV
Safety Centre
Rhenusplatz 3
59439 Holzwickede
Germany
Tel: +49 (0)2301 962920
Fax: + 49 (0)2301 9629210
Email: info@combisafe.nl

FINLAND

Combisafe Finland
Linjatie 5
01260 Vantaa
Finland
Tel: +358 (0)44 556 2210
E-mail: info@combisafe.se

GERMANY

Combisafe Deutschland GmbH
Safety Centre
Rhenusplatz 3
59439 Holzwickede
Germany
Tel: +49 (0)2301 962920
Fax: +49 (0)2301 9629210
Email: info@combisafe.de

FRANCE

Combisafe France SAS
63 bld de Menilmontant
75011 Paris
France
Tel. +33 (0)1 48 05 95 70
Fax: +33 (0)1 48 05 99 91
Email: info@combisafe.fr

UNITED ARAB EMIRATES

Combisafe Gulf FZE
Sharjah Airport International Freezone (SAIF)
B3-19
Sharjah
UAE
Tel: +971 (0)6 5575966
Fax: +971 (0)6 5575965
Email: info@combisafe.ae

ALL OTHER MARKETS

Combisafe International Ltd
Safety Centre
Cheaney Drive
Grange Park
Northampton NN4 5FB
United Kingdom
Tel: +44 (0)1604 660600
Fax: +44 (0)1604 662960
Email: info@combisafe.co.uk

